

## 1,3,5-Triazaadamantan-7-amine

Jaclyn Thomson,<sup>a</sup> Danielle M. Chisholm,<sup>a</sup> Allen G. Oliver<sup>b\*</sup> and J. Scott McIndoe<sup>a\*</sup><sup>a</sup>Department of Chemistry, University of Victoria, PO Box 3065, Victoria, BC V8W 3V6, Canada, and <sup>b</sup>University of Notre Dame, Department of Chemistry and Biochemistry, 251 Nieuwland Science Hall, Notre Dame, IN 46556-5670, USA  
Correspondence e-mail: aoliver2@nd.edu, mcindoe@uvic.ca

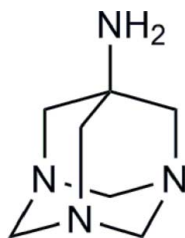
Received 16 September 2010; accepted 20 September 2010

Key indicators: single-crystal X-ray study;  $T = 150$  K; mean  $\sigma(\text{C}-\text{C}) = 0.001$  Å;  $R$  factor = 0.039;  $wR$  factor = 0.122; data-to-parameter ratio = 18.5.

The title compound,  $\text{C}_7\text{H}_{14}\text{N}_4$ , represents the first structurally characterized, isolated triazaadamantane. In the crystal structure, weak intermolecular  $\text{N}-\text{H}\cdots\text{N}$  hydrogen bonds link the molecules into columns about the crystallographic fourfold axis.

## Related literature

For general background to applications of the title compound and its preparation, see: Hodge (1972); Karelina *et al.* (1987); Kuznetsov *et al.* (2001); Nielsen (1975, 1977); Safar *et al.* (1975). For related structures, see: de Namor *et al.* (2008).



## Experimental

## Crystal data

 $\text{C}_7\text{H}_{14}\text{N}_4$   
 $M_r = 154.22$   
Tetragonal,  $P4_2/n$   
 $a = 15.5402$  (8) Å  
 $c = 6.5074$  (7) Å  
 $V = 1571.5$  (2) Å<sup>3</sup> $Z = 8$   
Mo  $K\alpha$  radiation  
 $\mu = 0.09$  mm<sup>-1</sup>  
 $T = 150$  K  
 $0.32 \times 0.24 \times 0.15$  mm

## Data collection

Bruker APEXII diffractometer  
Absorption correction: numerical  
(*SADABS*; Sheldrick, 2008a)  
 $T_{\min} = 0.973$ ,  $T_{\max} = 0.987$ 1555 measured reflections  
1960 independent reflections  
1662 reflections with  $I > 2\sigma(I)$   
 $R_{\text{int}} = 0.032$ 

## Refinement

 $R[F^2 > 2\sigma(F^2)] = 0.039$   
 $wR(F^2) = 0.122$   
 $S = 1.52$   
1960 reflections  
106 parametersH atoms treated by a mixture of independent and constrained refinement  
 $\Delta\rho_{\text{max}} = 0.28$  e Å<sup>-3</sup>  
 $\Delta\rho_{\text{min}} = -0.17$  e Å<sup>-3</sup>

Table 1

Hydrogen-bond geometry (Å, °).

$D-\text{H}\cdots A$	$D-\text{H}$	$\text{H}\cdots A$	$D\cdots A$	$D-\text{H}\cdots A$
$\text{N11}-\text{H11A}\cdots\text{N3}^i$	0.898 (12)	2.335 (13)	3.2316 (13)	176.0 (12)
$\text{N11}-\text{H11B}\cdots\text{N11}^{ii}$	0.895 (14)	2.253 (14)	3.1465 (14)	175.2 (11)

Symmetry codes: (i)  $x, y, z - 1$ ; (ii)  $-y + \frac{3}{2}, x, -z + \frac{1}{2}$ .

Data collection: *APEX2* (Bruker, 2005); cell refinement: *SAINT* (Bruker, 2005); data reduction: *SAINT*; program(s) used to solve structure: *SHELXS97* (Sheldrick, 2008b); program(s) used to refine structure: *SHELXL97* (Sheldrick, 2008b); molecular graphics: *XP* (Sheldrick, 2008b) and *POV-RAY* (Cason, 2003); software used to prepare material for publication: *XCIF* (Sheldrick, 2008b) and *pubCIF* (Westrip, 2010).

Data were recorded on an instrument supported by the National Science Foundation, Major Research Instrumentation (MRI) Program under grant No. CHE-0521569.

Supplementary data and figures for this paper are available from the IUCr electronic archives (Reference: CV2767).

## References

- Bruker (2005). *APEX2* and *SAINT*. Bruker-Nonius AXS, Madison, Wisconsin, USA.
- Cason, C. J. (2003). *POV-RAY*. Persistence of Vision Raytracer Pty Ltd, Victoria, Australia.
- Hodge, E. B. (1972). *J. Org. Chem.*, **37**, 320–321.
- Karelina, V. N., Goncharov, V. M., Mirontseva, T. V., Delektorskii, A. A. & Orekhov, S. V. (1987). USSR Patent SU1359277, December 12, 1987.
- Kuznetsov, R. M., Balueva, A. S., Serova, T. M. & Nikonov, G. N. (2001). *Russ. J. Gen. Chem.* **71**, 899–902.
- Namor, A. F. D. de, Nwogu, N. A., Zveitovich-Guerra, J. A., Piro, O. E. & Castellano, E. E. (2008). *J. Phys. Chem. B.*, **113**, 4775–4780.
- Nielsen, A. T. (1975). *J. Heterocycl. Chem.* **12**, 161–164.
- Nielsen, A. T. (1977). 7-(*N*-Methyl-*N*-Alkylamino)-1,3,5-Triazaadamantanes. US Patent 4012384, March 15, 1977.
- Safar, M., Galik, V., Kafka, Z. & Landa, S. (1975). *Collect. Czech. Chem. Commun.* **40**, 2179–2182.
- Sheldrick, G. M. (2008a). *SADABS* University of Göttingen, Germany.
- Sheldrick, G. M. (2008b). *Acta Cryst. A* **64**, 112–122.
- Westrip, S. P. (2010). *J. Appl. Cryst.* **43**, 920–925.

**supplementary materials**

*Acta Cryst.* (2010). E66, o2637 [ doi:10.1107/S1600536810037657 ]

## 1,3,5-Triazaadamantan-7-amine

J. Thomson, D. M. Chisholm, A. G. Oliver and J. S. McIndoe

### Comment

The title compound, 7-amino-1,3,5-triazaadamantane, **1**, is a member of the class of adamantane compounds. To the best of our knowledge there are only two structurally characterized compounds containing the 1,3,5-triazaadamantane moiety (de Namor *et al.*, 2008). However, both of the previously characterized species incorporate 7-nitro-1,3,5-triazaadamantane and are complexed with mercury.

7-Amino-1,3,5-triazaadamantane has been used as a curing agent in a number of processes from providing an alternative fuel source (Nielsen, 1977) to rubber manufacture (Karelina *et al.*, 1987). Further it has been used as a precursor to other adamantane compounds (notably phosphazaadamantanes, see for example Kuznetsov *et al.*, 2001). The reactivity of the amino functionality has been investigated widely.

In the solid state the compound forms one-dimensional H-bonded (Table 1) chains that run through the lattice parallel to the crystallographic *c*-axis about the  $4_2$  screw-axis (Figure 2). The hydrogen-bonding is only exhibited through contacts from the amino group to neighbouring amino groups. The three N atoms in the azaadamantane portion of the molecule are not involved in any intermolecular contacts.

### Experimental

7-Amino-1,3,5-triazaadamantane was prepared (Safar *et al.*, 1975) by Pd/C/H<sub>2</sub> reduction of 7-nitro-1,3,5-triazaadamantane (Hodge, 1972) in ethanol. NMR data was consistent with literature values (Nielsen, 1975). Single crystals suitable for X-ray crystallography were obtained from cooling a saturated ethanol solution of 7-amino-1,3,5-triazaadamantane to 4°C for one week.

### Refinement

C-bound H atoms were placed in geometrically idealized positions (C—H = 0.99 Å), and refined as riding with  $U_{\text{iso}}(\text{H}) = 1.2U_{\text{eq}}(\text{C})$ . Amino H-atoms were located on a difference map, and refined with bond restraint N—H = 0.90 (1) Å, and constraint  $U_{\text{iso}}(\text{H}) = 1.2U_{\text{eq}}(\text{N})$ .

Figures

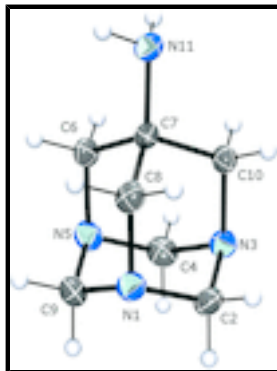


Fig. 1. View of 1 showing 50% probability displacement ellipsoids.

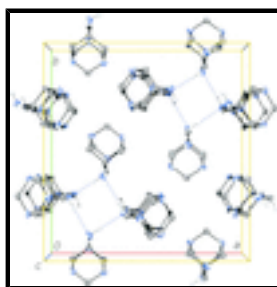


Fig. 2. Hydrogen-bonding and packing of 1 viewed along the *c*-axis. Dotted lines represent hydrogen bonding.

**1,3,5-Triazaadamantan-7-amine**

*Crystal data*

$C_7H_{14}N_4$

$M_r = 154.22$

Tetragonal,  $P4_2/n$

Hall symbol: -P 4bc

$a = 15.5402$  (8) Å

$c = 6.5074$  (7) Å

$V = 1571.5$  (2) Å<sup>3</sup>

$Z = 8$

$F(000) = 672$

$D_x = 1.304$  Mg m<sup>-3</sup>

Mo  $K\alpha$  radiation,  $\lambda = 0.71073$  Å

Cell parameters from 4624 reflections

$\theta = 2.6$ – $28.2^\circ$

$\mu = 0.09$  mm<sup>-1</sup>

$T = 150$  K

Columnar, colourless

$0.32 \times 0.24 \times 0.15$  mm

*Data collection*

Bruker APEXII  
diffractometer

Radiation source: fine-focus sealed tube  
graphite

Detector resolution: 83.33 pixels mm<sup>-1</sup>

$\omega/2\theta$ -scans

Absorption correction: numerical  
(*SADABS*; Sheldrick, 2008a)

$T_{\min} = 0.973$ ,  $T_{\max} = 0.987$

1960 independent reflections

1662 reflections with  $I > 2\sigma(I)$

$R_{\text{int}} = 0.032$

$\theta_{\text{max}} = 28.3^\circ$ ,  $\theta_{\text{min}} = 1.9^\circ$

$h = -20 \rightarrow 20$

$k = -19 \rightarrow 20$

$l = -8 \rightarrow 8$

15555 measured reflections

*Refinement*

Refinement on $F^2$	Primary atom site location: structure-invariant direct methods
Least-squares matrix: full	Secondary atom site location: difference Fourier map
$R[F^2 > 2\sigma(F^2)] = 0.039$	Hydrogen site location: inferred from neighbouring sites
$wR(F^2) = 0.122$	H atoms treated by a mixture of independent and constrained refinement
$S = 1.52$	$w = 1/[\sigma^2(F_o^2) + (0.056P)^2]$
1960 reflections	where $P = (F_o^2 + 2F_c^2)/3$
106 parameters	$(\Delta/\sigma)_{\max} = 0.035$
0 restraints	$\Delta\rho_{\max} = 0.28 \text{ e } \text{\AA}^{-3}$
	$\Delta\rho_{\min} = -0.17 \text{ e } \text{\AA}^{-3}$

*Special details*

**Geometry.** All e.s.d.'s (except the e.s.d. in the dihedral angle between two l.s. planes) are estimated using the full covariance matrix. The cell e.s.d.'s are taken into account individually in the estimation of e.s.d.'s in distances, angles and torsion angles; correlations between e.s.d.'s in cell parameters are only used when they are defined by crystal symmetry. An approximate (isotropic) treatment of cell e.s.d.'s is used for estimating e.s.d.'s involving l.s. planes.

**Refinement.** Refinement of  $F^2$  against ALL reflections. The weighted  $R$ -factor  $wR$  and goodness of fit  $S$  are based on  $F^2$ , conventional  $R$ -factors  $R$  are based on  $F$ , with  $F$  set to zero for negative  $F^2$ . The threshold expression of  $F^2 > \sigma(F^2)$  is used only for calculating  $R$ -factors(gt) *etc.* and is not relevant to the choice of reflections for refinement.  $R$ -factors based on  $F^2$  are statistically about twice as large as those based on  $F$ , and  $R$ -factors based on ALL data will be even larger.

The amino H atoms were located from a difference Fourier map and included with refined coordinates and thermal parameters tied to that of N11. All other H atoms were included in geometrically calculated positions with thermal parameters tied to that of the carbon to which they are bonded.

*Fractional atomic coordinates and isotropic or equivalent isotropic displacement parameters ( $\text{\AA}^2$ )*

	<i>x</i>	<i>y</i>	<i>z</i>	$U_{\text{iso}}^*/U_{\text{eq}}$
N1	0.62365 (6)	0.43256 (6)	0.53674 (13)	0.0254 (2)
C2	0.62425 (7)	0.48052 (7)	0.73108 (16)	0.0269 (3)
H2A	0.6191	0.4393	0.8464	0.032*
H2B	0.5734	0.5189	0.7352	0.032*
N3	0.70245 (6)	0.53264 (6)	0.76040 (12)	0.0251 (2)
C4	0.77644 (8)	0.47390 (7)	0.75022 (15)	0.0304 (3)
H4A	0.7729	0.4328	0.8661	0.037*
H4B	0.8300	0.5077	0.7673	0.037*
N5	0.78167 (6)	0.42511 (6)	0.55650 (14)	0.0283 (2)
C6	0.78851 (7)	0.48753 (7)	0.38591 (16)	0.0251 (2)
H6A	0.7917	0.4560	0.2539	0.030*
H6B	0.8422	0.5212	0.4014	0.030*
C7	0.71110 (6)	0.54920 (6)	0.38172 (14)	0.0199 (2)

## supplementary materials

---

C8	0.62901 (7)	0.49473 (7)	0.36610 (16)	0.0243 (2)
H8A	0.5781	0.5329	0.3692	0.029*
H8B	0.6287	0.4634	0.2337	0.029*
C9	0.70056 (7)	0.37757 (7)	0.53292 (17)	0.0297 (3)
H9A	0.6961	0.3346	0.6448	0.036*
H9B	0.7020	0.3458	0.4010	0.036*
C10	0.70855 (7)	0.59524 (6)	0.59025 (14)	0.0222 (2)
H10A	0.7613	0.6303	0.6070	0.027*
H10B	0.6584	0.6344	0.5947	0.027*
N11	0.71492 (6)	0.61249 (6)	0.21797 (14)	0.0255 (2)
H11A	0.7093 (8)	0.5886 (8)	0.0929 (19)	0.031*
H11B	0.7652 (9)	0.6402 (9)	0.2292 (18)	0.031*

### Atomic displacement parameters ( $\text{\AA}^2$ )

	$U^{11}$	$U^{22}$	$U^{33}$	$U^{12}$	$U^{13}$	$U^{23}$
N1	0.0272 (5)	0.0259 (5)	0.0232 (4)	-0.0056 (3)	0.0002 (3)	-0.0014 (3)
C2	0.0300 (6)	0.0293 (6)	0.0213 (5)	-0.0041 (4)	0.0042 (4)	0.0000 (4)
N3	0.0312 (5)	0.0259 (5)	0.0181 (4)	-0.0026 (4)	-0.0029 (3)	0.0000 (3)
C4	0.0318 (6)	0.0313 (6)	0.0282 (6)	0.0007 (5)	-0.0092 (4)	0.0038 (4)
N5	0.0273 (5)	0.0244 (5)	0.0332 (5)	0.0036 (3)	-0.0004 (4)	0.0017 (4)
C6	0.0224 (5)	0.0244 (5)	0.0285 (5)	0.0022 (4)	0.0039 (4)	-0.0012 (4)
C7	0.0200 (5)	0.0217 (5)	0.0179 (5)	0.0001 (4)	0.0004 (3)	-0.0009 (3)
C8	0.0238 (5)	0.0294 (6)	0.0198 (5)	-0.0038 (4)	-0.0027 (4)	-0.0024 (4)
C9	0.0364 (7)	0.0216 (6)	0.0312 (6)	-0.0017 (4)	0.0015 (4)	-0.0014 (4)
C10	0.0249 (5)	0.0216 (5)	0.0202 (5)	-0.0003 (4)	-0.0017 (4)	-0.0019 (4)
N11	0.0300 (5)	0.0274 (5)	0.0191 (4)	-0.0016 (4)	0.0006 (3)	0.0009 (3)

### Geometric parameters ( $\text{\AA}$ , $^\circ$ )

N1—C2	1.4679 (13)	C6—H6A	0.9900
N1—C9	1.4695 (15)	C6—H6B	0.9900
N1—C8	1.4742 (13)	C7—N11	1.4514 (12)
C2—N3	1.4729 (14)	C7—C10	1.5346 (13)
C2—H2A	0.9900	C7—C8	1.5343 (14)
C2—H2B	0.9900	C8—H8A	0.9900
N3—C4	1.4696 (14)	C8—H8B	0.9900
N3—C10	1.4769 (12)	C9—H9A	0.9900
C4—N5	1.4733 (13)	C9—H9B	0.9900
C4—H4A	0.9900	C10—H10A	0.9900
C4—H4B	0.9900	C10—H10B	0.9900
N5—C9	1.4691 (14)	N11—H11A	0.898 (12)
N5—C6	1.4780 (13)	N11—H11B	0.895 (14)
C6—C7	1.5383 (14)		
C2—N1—C9	107.74 (8)	N11—C7—C10	109.53 (8)
C2—N1—C8	108.41 (8)	N11—C7—C8	111.06 (8)
C9—N1—C8	108.81 (8)	C10—C7—C8	107.12 (8)
N1—C2—N3	113.33 (8)	N11—C7—C6	113.78 (8)

N1—C2—H2A	108.9	C10—C7—C6	107.16 (8)
N3—C2—H2A	108.9	C8—C7—C6	107.92 (8)
N1—C2—H2B	108.9	N1—C8—C7	111.01 (8)
N3—C2—H2B	108.9	N1—C8—H8A	109.4
H2A—C2—H2B	107.7	C7—C8—H8A	109.4
C4—N3—C2	107.35 (8)	N1—C8—H8B	109.4
C4—N3—C10	108.97 (8)	C7—C8—H8B	109.4
C2—N3—C10	108.54 (8)	H8A—C8—H8B	108.0
N3—C4—N5	113.67 (8)	N5—C9—N1	113.80 (9)
N3—C4—H4A	108.8	N5—C9—H9A	108.8
N5—C4—H4A	108.8	N1—C9—H9A	108.8
N3—C4—H4B	108.8	N5—C9—H9B	108.8
N5—C4—H4B	108.8	N1—C9—H9B	108.8
H4A—C4—H4B	107.7	H9A—C9—H9B	107.7
C9—N5—C4	107.51 (9)	N3—C10—C7	110.95 (8)
C9—N5—C6	108.26 (8)	N3—C10—H10A	109.4
C4—N5—C6	107.99 (8)	C7—C10—H10A	109.5
N5—C6—C7	111.46 (8)	N3—C10—H10B	109.4
N5—C6—H6A	109.3	C7—C10—H10B	109.5
C7—C6—H6A	109.3	H10A—C10—H10B	108.0
N5—C6—H6B	109.3	C7—N11—H11A	112.4 (8)
C7—C6—H6B	109.3	C7—N11—H11B	107.6 (8)
H6A—C6—H6B	108.0	H11A—N11—H11B	110.9 (11)
C9—N1—C2—N3	57.51 (11)	C9—N1—C8—C7	-57.88 (10)
C8—N1—C2—N3	-60.09 (11)	N11—C7—C8—N1	-177.96 (8)
N1—C2—N3—C4	-57.78 (11)	C10—C7—C8—N1	-58.39 (10)
N1—C2—N3—C10	59.87 (11)	C6—C7—C8—N1	56.69 (10)
C2—N3—C4—N5	57.63 (11)	C4—N5—C9—N1	56.62 (11)
C10—N3—C4—N5	-59.73 (11)	C6—N5—C9—N1	-59.81 (11)
N3—C4—N5—C9	-57.06 (12)	C2—N1—C9—N5	-57.07 (11)
N3—C4—N5—C6	59.55 (12)	C8—N1—C9—N5	60.27 (11)
C9—N5—C6—C7	57.55 (11)	C4—N3—C10—C7	58.16 (11)
C4—N5—C6—C7	-58.57 (11)	C2—N3—C10—C7	-58.45 (11)
N5—C6—C7—N11	179.47 (8)	N11—C7—C10—N3	178.59 (8)
N5—C6—C7—C10	58.25 (10)	C8—C7—C10—N3	58.05 (10)
N5—C6—C7—C8	-56.81 (10)	C6—C7—C10—N3	-57.55 (10)
C2—N1—C8—C7	59.04 (11)		

Hydrogen-bond geometry (Å, °)

<i>D</i> —H $\cdots$ <i>A</i>	<i>D</i> —H	H $\cdots$ <i>A</i>	<i>D</i> $\cdots$ <i>A</i>	<i>D</i> —H $\cdots$ <i>A</i>
N11—H11A $\cdots$ N3 <sup>i</sup>	0.898 (12)	2.335 (13)	3.2316 (13)	176.0 (12)
N11—H11B $\cdots$ N11 <sup>ii</sup>	0.895 (14)	2.253 (14)	3.1465 (14)	175.2 (11)

Symmetry codes: (i) *x*, *y*, *z*-1; (ii) -*y*+3/2, *x*, -*z*+1/2.

Fig. 1

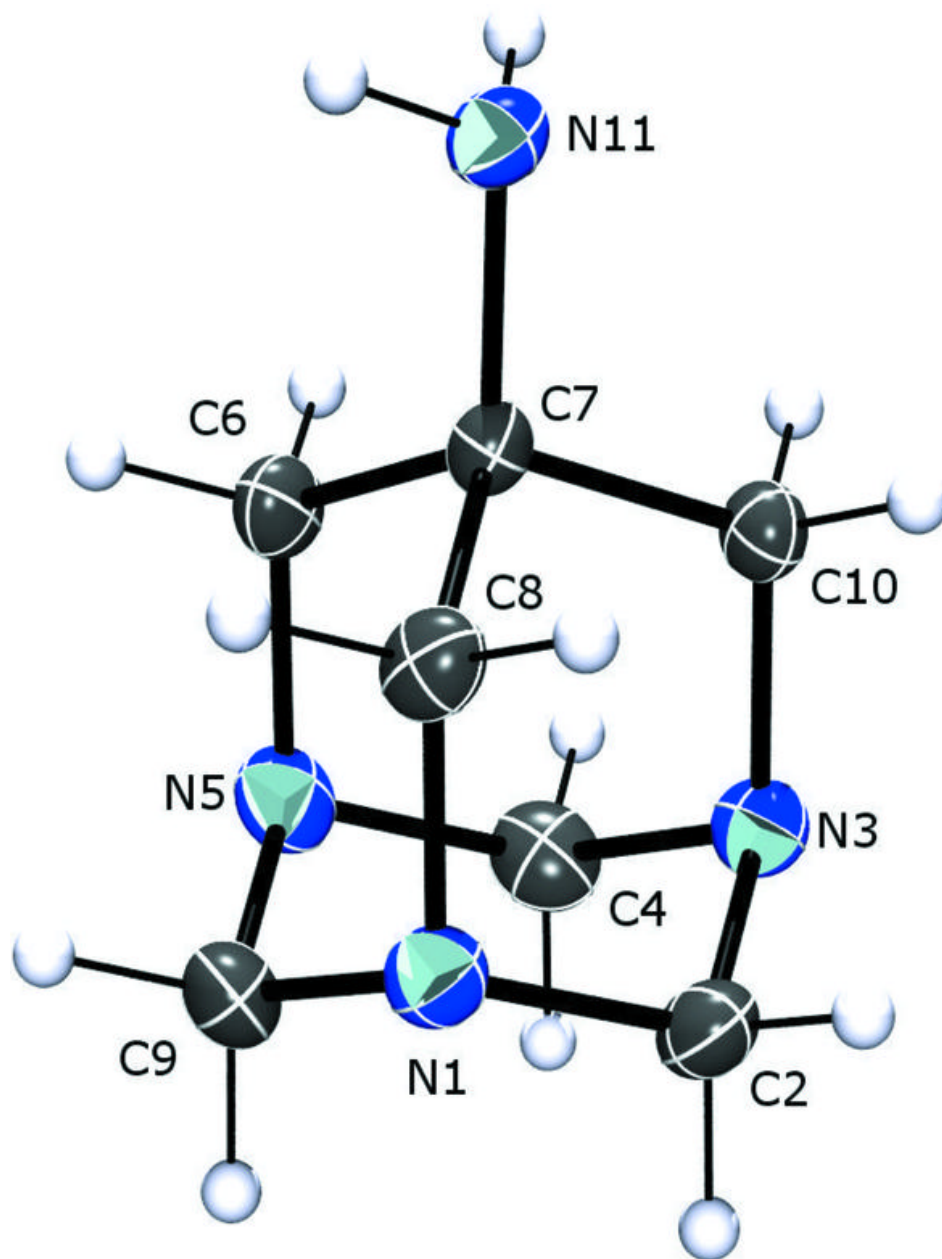




Fig. 2

